



GAT MONTHLY MEMBERSHIP PROGRESS REPORT

Results as of: 12/31/2022

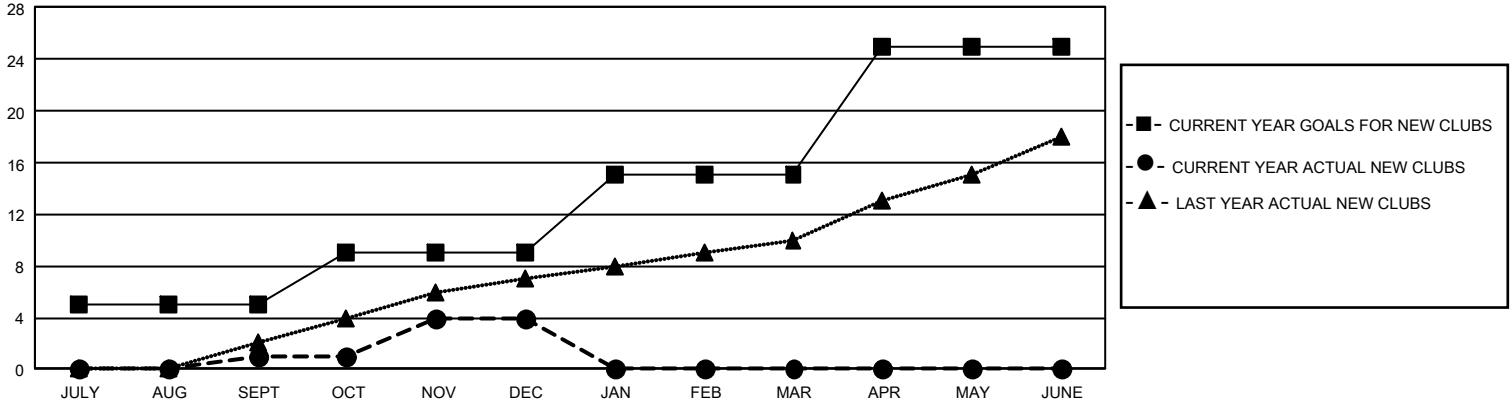
GMT Constitutional Area 4, Group B

REPORT DOES NOT INCLUDE CLUBS IN UNDISTRICTED AREAS.

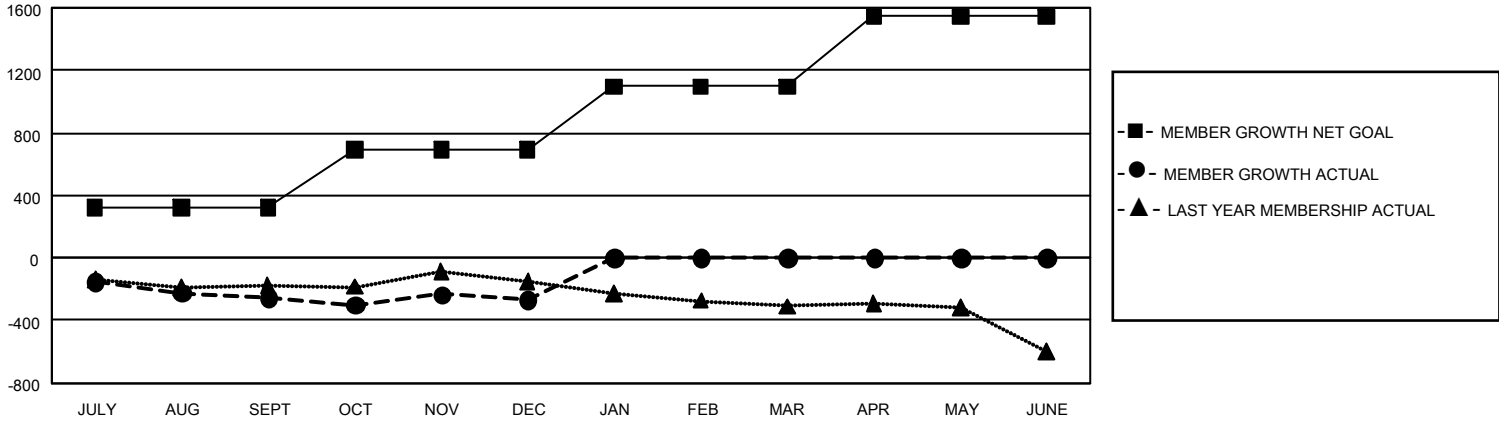
Clubs			
RESULTS FOR 2022-2023			
QUARTER	NEW CLUB GOAL	NEW CLUBS	DROPPED CLUBS
JULY/AUG/SEPT	15	1	4
OCT/NOV/DEC	12	3	2
JAN/FEB/MAR	18	0	0
APR/MAY/JUNE	30	0	0

Members			
RESULTS FOR 2022-2023			
QUARTER	MEMBER GROWTH NET GOAL	MEMBER GROWTH ACTUAL	DROPPED MEMBERS ACTUAL (including transfers)
JULY/AUG/SEPT	322	591	784
OCT/NOV/DEC	368	815	743
JAN/FEB/MAR	407	0	0
APR/MAY/JUNE	449	0	0

GOALS AND ACTUAL NEW CLUBS CUMULATIVE



GOALS AND ACTUAL MEMBERS CUMULATIVE



DROPPED CLUBS: 6	771 CLUBS OF 2,121 ADDED 1 OR MORE NEW MEMBERS	<u>GENDER DISTRIBUTION</u>	
		MALE 58,831 (83.87%) FEMALE 11,303 (16.11%) NON BINARY 0 (0.00%) PREFER NOT TO ANSWER 14 (0.02%)	
<u>DROPPED MEMBERS</u>		CLICK HERE FOR CUMULATIVE MEMBERSHIP DATA	TOTAL FAMILY UNIT MEMBERS 803
DECEASED 387 CLUB CANCELLED 4 OTHER 1,132 TOTAL 1,523	FAMILY MEMBERS PAYING HALF DUES 371		